



May  
2011



*The Sustainable Design Committee would like to say thanks to our guests:*

*Dave Potter  
Andrea Judge  
George Palmisciano  
Ken DeCosta  
Joe Malo  
Tim Thies  
Peter DiLorenzo*

*who attended the April Meeting at Suite 600.*

## **Green Lingo - Update: Hypermiling**

A reused term for the times, Hypermiling is the act of driving using techniques that maximize fuel economy. Indirect Green Lingo...however with gas prices at or above \$4.00 a gallon and going higher, it's a term most of us would embrace. Techniques include:

- Know and understand your current gas mileage,
- "Back Off"— aggressive and even non-aggressive driving (for example, not enough buffer to the car in front of you) negatively affects gas mileage,
- Try to keep your car moving whether you're in traffic congestion or approaching a traffic light; a stopped vehicle takes more gas to accelerate to speed,
- Slowly accelerate after stops,
- Maintain proper tire pressure, and
- Use slower driving speeds.

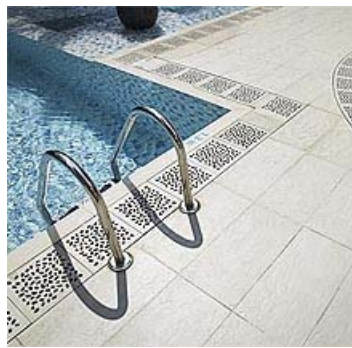
There are many more for those interested. Individually, each technique does not amount to much, however used together as driving habits, they can increase your MPG's.

## **Green at PARE: PARE attends the Massachusetts Sustainable Communities Conference**

Scott Lindgren and Cari Powers represented PARE at the first Massachusetts Sustainable Communities Conference held in Marlborough on April 15, 2011. Other attendees included local conservation agents, representatives from community groups, farmers, and a regional produce coordinator for Whole Foods. There were over 30 exhibitors, a book raffle, and sessions available with green coaches. One of the most impressive statistics noted throughout the day was information provided by one of the keynote speakers, Mark Sylvia, the commissioner of MA Department of Energy Resources. Mr. Sylvia stated that Massachusetts was currently number 2 in the country for energy efficiency. Besides the keynote address, other sessions attendees could attend included topics on energy, college programs, land use and transportation options, sustainable food systems for communities, best practices in communities throughout Massachusetts, and funding and technical assistance.

## **Green Product of the Month: Reconstituted Stone Grates**

Jonite © reconstituted stone grates are an innovative alternative to steel drainage grates. The manufacturing process for traditional steel grates involves the addition of carbon as a strengthening agent. Unlike steel grates, reconstituted stone grates are manufactured from recycled and low-impact materials. They provide a pleasing aesthetic and, unlike steel grates, do not create unwanted clanging from passing pedestrians and vehicles.



## **Green Current Events: Coal Tar Pavement Sealants**

The state of Washington has become the first in the nation to ban toxic asphalt sealants made from cancer-causing industrial wastes. Coal tar-based sealants are typically used in the sealing of driveways, parking lots, and playgrounds. It has been found that the toxic ingredients in coal tar-based sealants are turning up in ordinary house dust due to tracking the dust in on a daily basis. Also, it is starting to be found in streams, lakes, and waterways as a result of stormwater runoff. The chemicals have been found in driveways at concentrations so high that it would require a hazardous cleanup if found at a typical site remediation project.

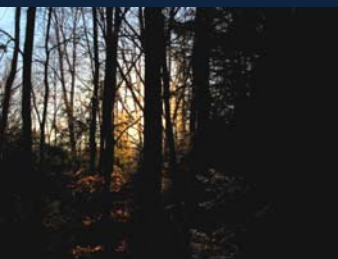
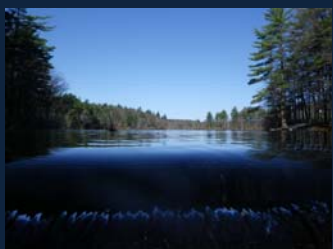
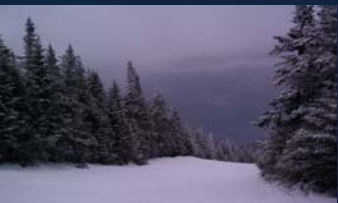
The alternative to coal tar-based sealants is a class of asphalt-based sealants.

For more information click on the following link:

[http://www.msnbc.msn.com/id/42917004/ns/us\\_news-environment/](http://www.msnbc.msn.com/id/42917004/ns/us_news-environment/)



## Other Earth Day Contest Entries:



## Congratulations to Lauren Hastings Winner of the Earth Day Photo Contest



“Favorite Hiking Spot”

“I recently took this photo at one of my favorite local hiking spots. As you walk along this narrow boardwalk, a wooded swamp gradually transitions to an Atlantic White Cedar Bog - a dense mat of peat moss teeming with unique species such as the carnivorous Pitcher Plant, held together by a network of roots from stunted shrubs and cedar trees. This rare ecosystem type remains in only a handful of locations in southern New England. To me, the complex beauty of the natural world is a humbling reminder that we will never know everything, and that we should strive to work with the land rather than against it. Experiencing places like this, preserved in their original state, will always motivate me to contribute to environmental protection in my career and in my everyday life.”

## And Honorable Mention goes to Tom Perry



“Groundwater Recharge for the Future”

All of my life I have been involved in construction: as a child helping my father with carpentry projects, as a teen and young adult with my family’s construction company, and now as an engineer working on large and complex projects. I knew that by becoming an engineer I would have a chance to have an impact on building projects. What I did not know is that I would have a chance to make an impact not solely on how a project performed for a client, but how a project performs for the environment the project is in. Motivating me every day is providing an environmentally sound design treating pollutants and addressing environmental issues. Creating a final product that not only provides for future citizens to use, but creates an environment that ensures there will be a *future* to use it.